



# INKJET PRINTERS



## What is inkjet?



Inkjet printers are the most common type of printing devices, which are used as inexpensive home printers as well as in large industrial machines. They produce digital copies by spraying ink onto the paper.

The heart of an inkjet printer is the printhead, containing thousands of tiny microscopic nozzles firing ink onto the substrate. These droplets are typically 3-5 picolitres small, which creates a raster free, photo quality print image.

Combined with a super precise moving mechanism this results in millions of droplets fired every second. Once the droplet touches the substrate a binding effect will take place between the special designed ink and the inkjet coating, delivering stunning, crisp clear, high contrast, waterproof and fade-resistant colour prints.

Beside the standard dye-based ink, which is perfect for any type of media with inkjet coating, we offer for most systems a pigment ink in combination with matte surfaces to get a much higher UV-resistance for outdoor use.

DTM Print is frequently evaluating the market to offer the latest and best technology available in the inkjet market. To produce exceptional product labels for all kind of applications you not only need advanced print technology but also high-quality materials. Inkjet substrates can include matte, semi-gloss and high-gloss materials in paper and polyester as well as special materials like silver, gold or holographic.

### Key end-user sectors for booming inkjet printing market

Manufacturers and private labellers use the inkjet label printers to print any kind of food and beverage labels, chemical labels, cosmetic labels, barcode and box labels, personalised labels and many more. To get some ideas please find below a list of our key applications and markets.

- Point of Sale (information signs, coupons, vouchers, price and promotion stickers, labels for cardboards and boxes)
- Logistics (barcode labels)
- Beverages (labels for beer, wine, spirits, coffee, water, etc.)
- Food (labels for food manufacturers, food services, catering, bakeries, beekeepers, etc.)
- Events/Meetings/Conventions (visitor badges, concert/theatre/cinema tickets)
- Hospitality (coupons/vouchers, tickets, name badges)
- Retail Shops (coupons, signs, labels for seasonal products)
- Personalisation (customised labels in all markets, labels for special occasions like weddings, anniversaries, etc.)
- Manufacturing (barcode, box and product labels)
- Seasonal Products & Market Testing (special editions, prototype labels)
- Industry (GHS conform labels)



# LX500e

COLOR LABEL PRINTER



## Facts about the LX500e Color Label Printer

The LX500e/LX500ec uses advanced high-resolution inkjet technology to produce short runs of product labels in impressive professional quality. Best of all, depending upon the quantity you print, the price per label will be significantly less than labels printed on flexo or offset.

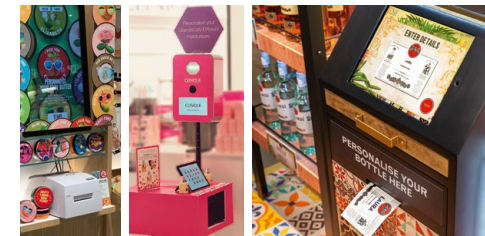
### Key facts


- ▶ 4800 dpi full-colour printing
- ▶ 16.7 million colours printable
- ▶ Interchangeable dye or pigment inks
- ▶ LX500ec: built-in label cutter (guillotine-style)
- ▶ Small, compact size
- ▶ Prints up to 108 mm (4.25") wide



### Perfect for POS and kiosk solutions

Everyone loves personalised labels. Due to the small size of the printer, the LX500e/LX500ec is perfect for POS applications. Let your customers create personalised labels right in your shop! DTM Print provides an individual app solution that can be adapted to your requirements.




 **Ink**  
Single tri-colour CMY

 **Print Width**  
19 - 108 mm (0.75 - 4.25")

 **Volume**  
Up to 1,000/day

 **Features**  
Guillotine cutter (LX500ec)

 **Print Speed**  
Up to 63.5 mm/s (2.5"/s)

 **Compatible with**  
Windows + macOS

### What's in the box?

- ▶ NiceLabel Free 2019 DTM Version & BarTender UltraLite (Windows) Belight Swift Publisher 5 (Mac)
- ▶ 4x3" DTM Paper High Gloss starter roll
- ▶ Dye-based CMY ink cartridge
- ▶ Instructions & sample book

### More information

Scan the QR code to see all videos related to the LX500e/LX500ec.

Visit [dtm-print.eu](http://dtm-print.eu) for detailed information.



# LX600e

COLOR LABEL PRINTER



**Ink**  
Single tri-colour CMY



**Print Width**  
13 - 127 mm (0.5 - 5")



**Volume**  
Up to 3,000/day



**Features**  
Pizza-wheel cutter



**Print Speed**  
Up to 114 mm/s (4.5"/s)



**Compatible with**  
Windows + macOS

## Facts about the LX600e Color Label Printer

The LX600e single cartridge solution for both pigment and dye ink allows users to print a wider variety of applications while easing print operations. Print labels when and where you need them in just the quantities you can actually use. It includes all the same quality features as the LX610e without the built-in contour cutter.

### Key facts

- ▶ 4800 dpi full-colour printing
- ▶ 16.7 million colours printable
- ▶ Interchangeable dye or pigment inks
- ▶ Built-in label cutter (pizza-wheel style)
- ▶ Compact & lightweight desktop printer
- ▶ Prints up to 127 mm (5") wide



### What's in the box?

- ▶ NiceLabel Free 2019 DTM Version & BarTender UltraLite (Windows) Belight Swift Publisher 5 (Mac)
- ▶ Dye-based CMY ink cartridge
- ▶ Instructions & sample book

### Low maintenance

Gone are the days of clogged nozzles and unwieldy and expensive printhead replacements. Users get a brand new printhead each time they change the cartridge, simplifying maintenance and dramatically lowering on-going operating costs. With a simple swap-out of ink cartridges, LX600e can print with dye-based ink or pigment ink. Both types of ink work interchangeably on the same printer.

### More information

Scan the QR code to see all videos related to the LX600e.

Visit [dtm-print.eu](http://dtm-print.eu) for detailed information.



# LX610e

COLOR LABEL PRINTER



Print & contour cut all-in-one



**Ink**  
Single tri-colour CMY



**Print Width**  
13 - 127 mm (0.5 - 5")



**Volume**  
Up to 3,000/day



**Features**  
Digital contour cutter & Pizza-wheel cutter



**Print Speed**  
Up to 114 mm/s (4.5"/s)



**Compatible with**  
Windows + macOS

## Facts about the LX610e Pro Color Label Printer

LX610e's printing and precision die-cutting are incorporated into one easy, time-saving step. Print and contour cut custom labels into any shape – all in one simple, unattended process. Just import your design and select a cut format. Choose from standard die-cuts or create an individual contour cut that automatically and precisely follows the outline of the image. You'll never need to order a custom die again.

### Key facts

- ▶ 4800 dpi full-colour printing
- ▶ 16.7 million colours printable
- ▶ Interchangeable dye or pigment inks
- ▶ Digital contour cutter & built-in label cutter (pizza-wheel style)
- ▶ Prints up to 127 mm (5") wide
- ▶ Lamination mode



### Print & cut software PTCreat<sup>TM</sup> Pro

With the included PTCreat Pro software you are ready for importing images and different file types as .psd, .ai and .pdf. Powerful features such as layering, the export of images and contour cutting around intricate artwork are part of PTCreat Pro. An auto-trace and cut function is especially useful for printing and cutting complicated shapes and designs.

### What's in the box?

- ▶ PTCreat Pro software (Windows & Mac)
- ▶ NiceLabel Free 2019 DTM Version (Windows) Belight Swift Publisher 5 (Mac)
- ▶ DTM Paper Semi Gloss roll
- ▶ Dye-based CMY ink cartridge
- ▶ Instructions & sample book

### More information

Scan the QR code to see all videos related to the LX610e.

Visit [dtm-print.eu](http://dtm-print.eu) for detailed information.



# LX910e

COLOR LABEL PRINTER



**Ink**  
Single tri-colour CMY



**Print Width**  
13 - 210 mm (0.5 - 8.25")



**Volume**  
Up to 5,000/day



**Features**  
Pizza-wheel cutter



**Print Speed**  
Up to 114 mm/s (4.5"/s)



**Compatible with**  
Windows + macOS

## Facts about the LX910e Color Label Printer

With the LX910e you can quickly and easily print labels in outstanding print quality over a width of up to 210 mm. It has a powder-coated metal housing that is certified for areas with increased safety regulations. Especially suitable for use in mechanical and plant engineering, or when electromagnetic screening (EMC) is required.

### Key facts

- ▶ 4800 dpi full-colour printing
- ▶ 16.7 million colours printable
- ▶ Interchangeable dye or pigment inks
- ▶ Built-in label cutter (pizza-wheel style)
- ▶ Sturdy Metal Enclosure
- ▶ Prints up to 210 mm wide



### One printer, two solutions

Joining at the nexus of versatility and simplicity, its single cartridge solution for both pigment and dye ink allows users to print for a wider variety of applications while easing print operations. Switch easily between dye and pigment ink without changing the printhead.

### What's in the box?

- ▶ NiceLabel Free 2019 DTM Version & BarTender UltraLite (Windows)
- ▶ Belight Swift Publisher 5 (Mac)
- ▶ 4x3" DTM Paper High Gloss starter roll
- ▶ Dye-based CMY ink cartridge
- ▶ Instructions & sample book

### More information

Scan the QR code to see all videos related to the LX910e.

Visit [dtm-print.eu](http://dtm-print.eu) for detailed information.



# LX3000e

COLOR LABEL PRINTER



## Facts about the LX3000e Color Label Printer

LX3000e features an all-new tanked-ink system and printhead and provides the lowest cost per print. The printer offers the same quality features as LX910e with the addition of an user-replaceable printhead and large individual CMY ink tanks with either dye or pigment ink. It's perfect for a range of industries including health and beauty, food and beverage, chemicals and more.

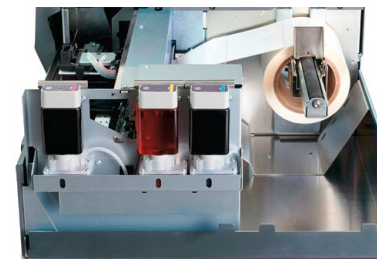
### Key facts

- ▶ 4800 dpi full-colour printing
- ▶ 16.7 million colours
- ▶ Separate, large ink tanks - 60 ml each & pre-primed printhead with 42 ml ink
- ▶ Built-in label cutter (pizza-wheel style)
- ▶ Wired ethernet for network connection
- ▶ Prints up to 210 mm wide



### Large ink tanks - lowest printing costs

With separate ink tanks for cyan, magenta and yellow, the LX3000e achieves the lowest print cost per label in its class. Thanks to the user-replaceable print head, a later conversion between dye or pigment ink is possible at any time. The printer impresses with its outstanding print quality, ease of maintenance and print width of up to 210 mm.



**Ink**  
Separate CMY ink tanks

**Volume**  
Up to 10,000+ per day

**Print Speed**  
Up to 114 mm/s (4.5"/s)

**Print Width**  
13 - 210 mm (0.5 - 8.25")

**Features**  
Pizza-wheel cutter & Wired ethernet

**Compatible with**  
Windows & macOS (Q4/2021)

### What's in the box?

- ▶ NiceLabel Free 2019 DTM Version & BarTender UltraLite (Windows)
- ▶ 4x3" DTM Paper High Gloss starter roll
- ▶ User-replaceable printhead
- ▶ A set of CMY ink tanks
- ▶ Instructions & sample book

### More information

Scan the QR code to see all videos related to the LX3000e.

Visit [dtm-print.eu](http://dtm-print.eu) for detailed information.



# Technical Specifications – Comparison Table



	<b>LX500e</b> COLOR LABEL PRINTER	<b>LX600e</b> COLOR LABEL PRINTER	<b>LX610e</b> COLOR LABEL PRINTER	<b>LX910e</b> COLOR LABEL PRINTER	<b>LX3000e</b> COLOR LABEL PRINTER
<b>Print Method</b>	Thermal inkjet with dye or pigment ink			Thermal inkjet with dye or pigment ink	
<b>Print Resolution</b>	600 x 1200 dpi native; up to 1200 x 4800 dpi			600 x 1200 dpi native; up to 1200 x 4800 dpi	
<b>Droplet size</b>	4 picolitre			4 picolitre	
<b>Print Speeds</b>	Up to 63.5 mm (2.5") per second	Up to 114 mm (4.5") per second	Up to 114 mm (4.5") per second		
<b>Inks</b>	Single high capacity CMY ink cartridge, process black			Single high capacity CMY ink cartridge, process black	Separate high capacity ink tanks for cyan, magenta and yellow (CMY), process black
<b>Printhead</b>	Included in cartridge			Included in cartridge	User replaceable, multi-use printhead
<b>Colours</b>	16.7 million			16.7 million	
<b>Colour Matching</b>	ICC colour profiles included; ability to add custom ICC colour profiles for other media types			ICC colour profiles included; ability to add custom ICC colour profiles for other media types	
<b>Print Width</b>	19 mm (0.75") to 108 mm (4.25")	13 mm (0.5") to 127 mm (5")	Pre die-cut: 13 mm (0.5") to 127 mm (5") Digital die-cut: 13 mm (0.5") to 104 mm (4.1")	13 mm (0.5") to 210 mm (8.25")	
<b>Media Width</b>	25 mm (1") to 108 mm (4.25")	54 mm (2.125") to 130 mm (5.125")	Pre die-cut: 54 mm (2.125") to 130 mm (5.125") Digital die-cut: 121 mm (4.75")	38 mm (1.5") to 213 mm (8.375")	
<b>Print Length</b>	6 mm (0.25") to 610 mm (24")	13 mm (0.5") to 305 mm (12")	13 mm (0.5") to 305 mm (12")	13 mm (0.5") to 610 mm (24")	
<b>Media Types</b>	Roll-fed pressure-sensitive labels, roll-fed tags, fan-fold labels or tags			Roll-fed pressure-sensitive labels, roll-fed tags, fan-fold labels or tags DTM Print approved materials for continuous digital die-cutting media.	Roll-fed pressure-sensitive labels, roll-fed tags, fan-fold labels or tags
<b>Media Sensing</b>	Moveable see-through sensor for die-cut labels; reflective sensor for labels and tags with black stripe; can use continuous and pre-printed labels and tag			Moveable see-through sensor for die-cut labels; reflective sensor for labels and tags with black stripe; can use continuous and pre-printed labels and tags	
<b>Media Feed</b>	Internal or external			Internal or external	
<b>Supply Roll</b>	127 mm (5") maximum diameter on 51 mm (2") core; core has additional restrictions - see manual	152 mm (6") maximum diameter on 76 mm (3") core	152 mm (6") maximum diameter on 76 mm (3") core		
<b>Cutter</b>	LX500ec with built-in guillotine style label cutter	Built-in "pizza-wheel" style label cutter	Built-in die-cutting knife blade Built-in "pizza-wheel" style label cutter	Built-in "pizza-wheel" style label cutter	
<b>Ink Level Warning</b>	Calculates actual number of prints remaining based upon ink usage of graphics being printed.			Calculates actual number of prints remaining based upon ink usage of graphics being printed.	
<b>Operating Systems</b>	Windows 7 - 10   Mac OS X 10.11 - macOS 11			Windows 7 - 10   Mac OS X 10.11 - macOS 11	Windows 7 - 10   Mac OS - coming soon
<b>Data Interface</b>	USB 2.0			USB 2.0	USB 2.0, Wired Ethernet
<b>Label Design Software</b>	BarTender UltraLite and NiceLabel Free 2019 DTM Version (Windows)   Belight Swift Publisher 5 (Mac) Can also be used with most other popular label design & graphics programs.			Digital die-cut: PTCreat Software (for Windows & Mac) Pre die-cut: BarTender UltraLite and NiceLabel Free 2019 DTM Version (Windows)   Belight Swift Publisher 5 (Mac)	BarTender UltraLite & NiceLabel Free 2019 DTM Version (Windows) Belight Swift Publisher 5 (Mac) Can also be used with most other popular label design & graphics programs.
<b>Power Requirements</b>	100-240 V AC, 60 W or 12 V DC, 5.0 A			100-240 V AC, 60 W or 12 V DC, 5.0 A	
<b>Certifications</b>	UL, UL-C, CE, FCC Class B	UL, UL-C, CE, FCC Class A	UL, UL-C, CE, FCC Class A	UL, UL-C, CE, FCC Class B	UL, UL-C, CE, FCC Class A
<b>Weight</b>	3.2 kg	5.7 kg	5.7 kg	16.6 kg	16.6 kg
<b>Dimensions (WxHxD)</b>	264 mm x 180 mm x 389 mm	345 mm x 242 mm x 432 mm	345 mm x 242 mm x 432 mm	438 mm x 231 mm x 438 mm	
<b>Operating Temperature</b>	10 °C to 35 °C			10 °C to 35 °C	
<b>Operating Humidity</b>	10 % to 60 % RH (non-condensing)			10 % to 60 % RH (non-condensing)	
<b>Available Versions</b>	LX500e (074274)   LX500ec with cutter (074276) RX500e with RFID module (074256)	-	-	-	LX3000e with dye-based ink (074445) LX3000e with pigment ink (074446)
<b>What's in the Box</b>	LX500e Color Label Printer, one dye-based CMY ink cartridge (053374), 4x3" DTM Paper High Gloss starter roll, USB 2.0 cable, EU power cord and instructions	LX600e Color Label Printer, one dye-based CMY ink cartridge (053496), USB 2.0 cable, EU power cord and instructions	LX610e Color Label Printer, PTCreat Pro software, one dye-based CMY ink cartridge (053496), DTM Paper Semi Gloss roll (CC36SG122HIS), USB 2.0 cable, EU power cord and instructions	LX910e Color Label Printer, one dye-based CMY ink cartridge (053492), 4x3" DTM Paper High Gloss starter roll, USB 2.0 cable, EU power cord and instructions	LX3000e Color Label Printer, a set of CMY ink tanks, a pre-primed printhead, 4x3" DTM Paper High Gloss starter roll, USB 2.0 cable, EU power cord and instructions
<b>Warranty</b>	36 months (after product registration, for devices purchased in EU and EFTA countries)			36 months (after product registration, for devices purchased in EU and EFTA countries)	
<b>Manufacturer</b>	Primera Technology, Inc.			Primera Technology, Inc.	





# LOOKING FOR LABELS?

Recommended DTM Genuine Label Stock for inkjet printers is available in many standard sizes as well as custom-made shapes & sizes.

YOU WANT SAMPLES?

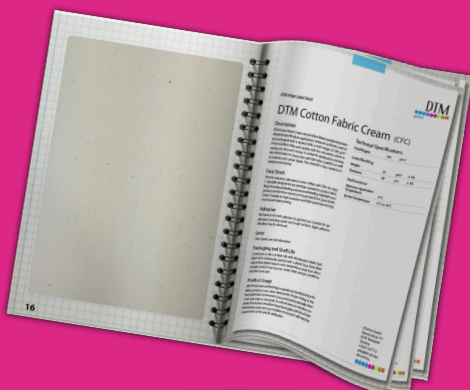


[sales@dtm-print.eu](mailto:sales@dtm-print.eu)

MORE INFORMATION:



[supplies.dtm-print.eu](http://supplies.dtm-print.eu)



DTM Print GmbH  
Mainzer Strasse 131  
65187 Wiesbaden  
Germany  
+49 611 927770  
[sales@dtm-print.eu](mailto:sales@dtm-print.eu)  
[dtm-print.eu](http://dtm-print.eu)

